



SALVATOR APARTMENTS

ARDEN WAY, SACRAMENTO, CALIFORNIA

New apartments serve as a catalyst for planned neighborhood revitalization and growth on the Arden Way corridor.

TRANSIT-ORIENTED COMMUNITY

Salvator Apartments is an infill development located near the Royal Oaks Light Rail Station, providing access to transportation to downtown Sacramento and other nearby neighborhood areas with jobs and services. Community HousingWorks' sustainable, transit-oriented development features 128 new apartment homes.

Improvements along Arden Way near the project include new sidewalks, landscaping, lighting, bike lanes, and easier access to the nearby light rail station.

Two 4-story buildings provide affordable housing to the local workforce, families, seniors, and veterans. The buildings engage the street with windows, balconies, and ground floor patios to enhance interaction between residents and the community.

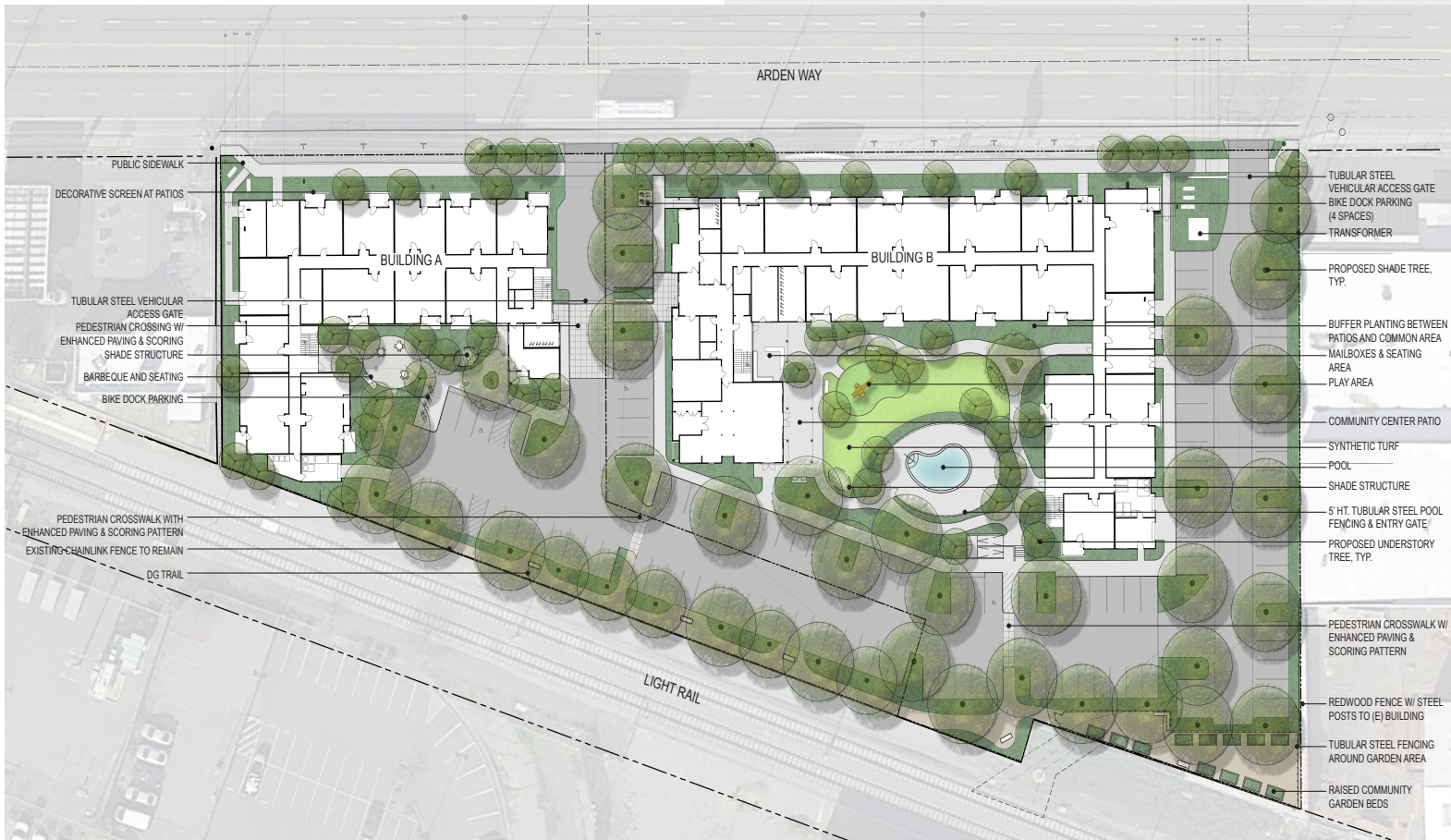
Ranging in size from studio to three bedroom, each apartment includes sustainable features; solar thermal hot water heating, Energy Star appliances, water-saving plumbing fixtures, dual pane windows, and energy efficient heating and air conditioning.

A large shared courtyard between the two buildings, along with a resident garden, children's play area, barbeques, outdoor seating, exercise path, bike storage, and swimming pool are shared outdoor amenities for residents. 4,000 square feet of ground floor community space includes a computer lab, multipurpose room, leasing office, and laundry facilities.



SPECIALIZED APPROACHES

- Transit oriented
- Infill development
- Solar thermal hot water heating and PV
- Energy Star appliances
- Water-saving plumbing fixtures
- Dual pane windows
- Energy efficient heating and air conditioning
- GreenPoint Rated



OWNER/DEVELOPER:
Community HousingWorks (CHW)

ARCHITECT:
Mogavero Architects

CIVIL ENGINEER:
Wood Rodgers

LANDSCAPE ARCHITECT:
Schmidt Design Group

GENERAL CONTRACTOR:
Sun Country Builders

UNIT MIX:
128 apartment homes
Studios, 1, 2, and 3 bedrooms

COMMUNITY SPACE:
4,000 square feet

CONSTRUCTION START:
2020

CONSTRUCTION COMPLETION:
June 2023